



Dripping Springs Southwest Connection Study

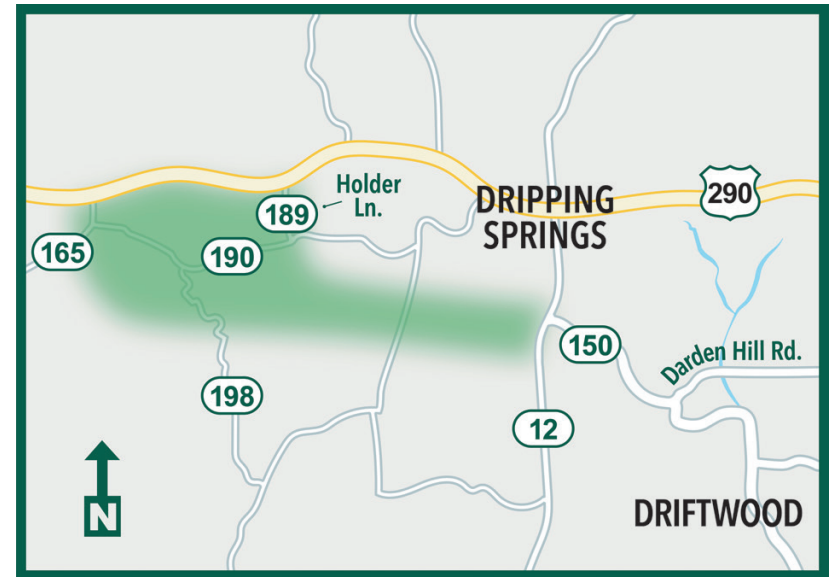
VIRTUAL OPEN HOUSE

Available Online April 4-29, 2022

improve150.com/open-house

PURPOSE

To identify a route and complete preliminary engineering (20% design) for a future roadway from the intersection of RM 150 and RM 12 to extend around the southwest side of Dripping Springs and connect to US 290.



 Dripping Springs Southwest Connection Study Area

GOALS

Study the area to identify a feasible footprint for a future roadway, which considers current and future development

Coordinate with property owners and the community to share information on the study, receive input, and minimize impacts where possible

Plan ahead to help the County and other partners plan for design, environmental, and budgeting considerations

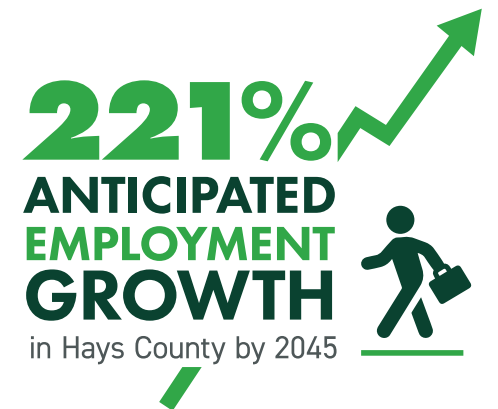
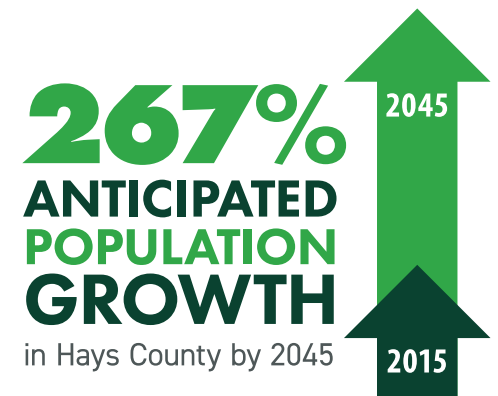
WHY IS THE STUDY NEEDED?

RAPID GROWTH Dripping Springs population has more than doubled in population from 2015-2020, and Hays County is anticipated to grow 267% by 2045.

HAYS COUNTY RESPONSIBILITY It is the County's responsibility to plan for transportation and mobility needs to provide safe, reliable connections and options for travelers in the area today and in the future.

ROUTE PRESERVATION Given the rapid growth, it is important to plan ahead to preserve a route for a new road that considers current and future development.

US 290 ALTERNATIVE Improvements to US 290 are needed and TxDOT has plans to study the corridor. In addition to US 290 improvements, alternate routes and connections are needed as US 290 becomes more and more congested.



Data Source: CAMPO 2045
Regional Transportation Plan

ACTIVITIES TO DATE

LATE 2019

- Hays County contracted K Friese + Associates as lead consultants for the study

2020

- Collected and evaluated data
- Developed draft route concepts
- Citizens Advisory Panel (CAP) members identified

2021

- 5 CAP meetings
- Virtual Open House and Comment Period #1 March 22-April 9
- Meetings with property owners and stakeholders

2022

- Meetings with property owners and stakeholders
- Revise route
- CAP meeting
- Open House and Comment Period #2

UPCOMING IN 2022

- Finalize route and complete preliminary drainage analysis
- Present study to Commissioners Court

COMMUNITY ENGAGEMENT SUMMARY

VIRTUAL OPEN HOUSE - SPRING 2021



1,510

unique visitors
to the Virtual
Open House



284

total
comments
collected

1

texted
comment

142

survey
responses

21

emailed
comments

119

interactive
map
comments

STAKEHOLDER MEETINGS



42

Property owner
and stakeholder
meetings

6



Citizen
Advisory Panel
(CAP) meetings

COMMUNITY INPUT HIGHLIGHTS



Recognition of need for additional capacity and other travel options

Opposition from impacted property owners and residents in newer developments

Concern for noise impacts and light pollution

Ensure that further traffic and environmental studies are conducted

Desire to protect natural features, wildlife, and waterways



BACKGROUND

The need for additional roadway capacity south and west of Dripping Springs has been identified in several previous plans and studies:

HAYS COUNTY TRANSPORTATION PLAN, 2013

Identified the need for a new route from the intersection at RM 12 and RM 150 to US 290 at Roger Hanks Parkway.

RM 150 WEST CHARACTER PLAN, 2017

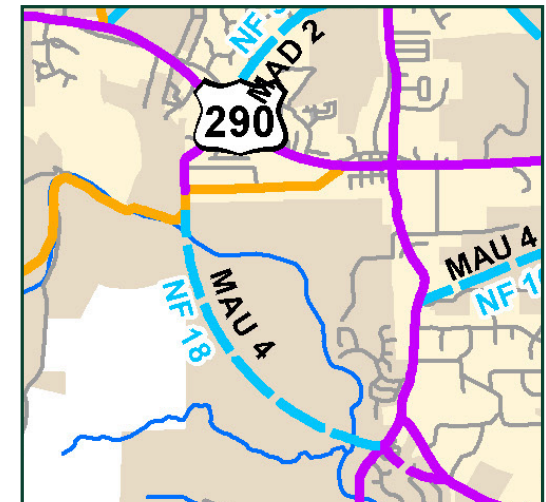
Identified needed improvements at the intersection of RM 12 and RM 150 and indicated a preference by the public for the use of roundabouts over signalized intersection.

THE CITY OF DRIPPING SPRINGS TRANSPORTATION MASTER PLAN, 2014, 2018, 2021

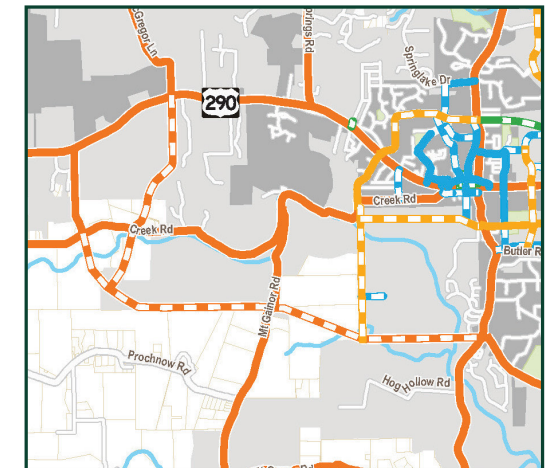
Identified a possible new roadway, which would create a connection at Holder Ln. and US 290.

HAYS COUNTY TRANSPORTATION PLAN, 2021

Identified need for connection from RM 12 at RM 150 to extend west and connect to US 290 west of Dripping Springs near Holder Ln.

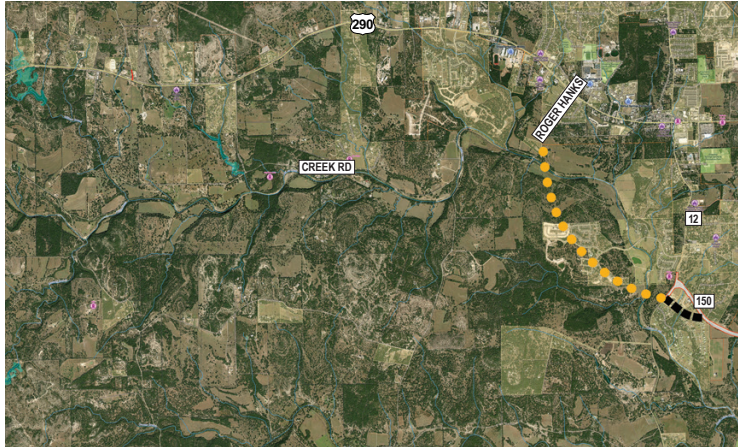


Hays County Transportation Plan, 2013



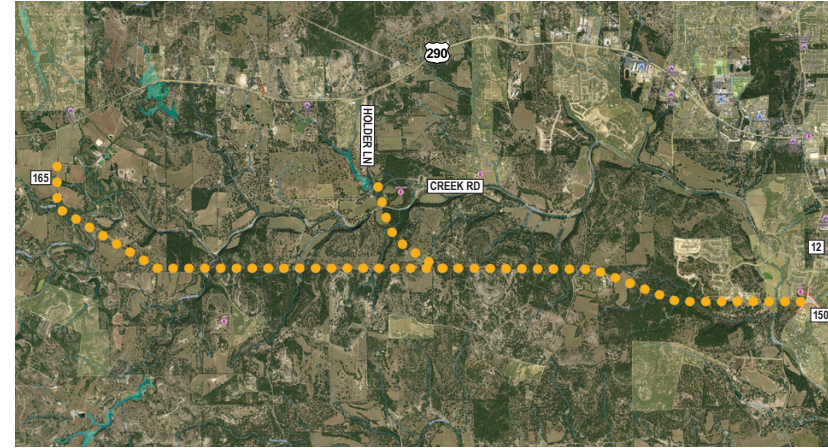
Dripping Springs Transportation Master Plan, 2021

BACKGROUND



HAYS COUNTY TRANSPORTATION PLAN 2013

Identified a proposed connection to US 290 at Roger Hanks Parkway.

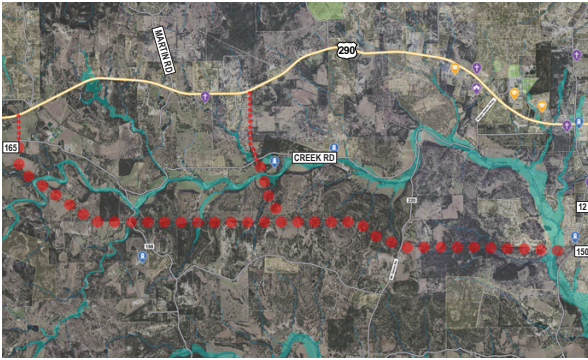


HAYS COUNTY TRANSPORTATION PLAN 2021

Identified recommended connections from RM 12 to Holder Lane and FM 165.

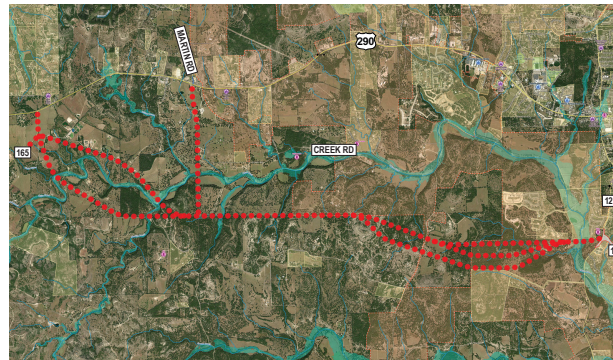
ROUTE OPTIONS & REFINEMENT

Different route options have been evaluated throughout this process.



INITIAL ROUTE OPTION Spring 2021

The route options presented during the Virtual Open House in the Spring of 2021 included connections at Holder Ln. and RM 165.



UPDATED ROUTE OPTION Fall 2021 – Winter 2022

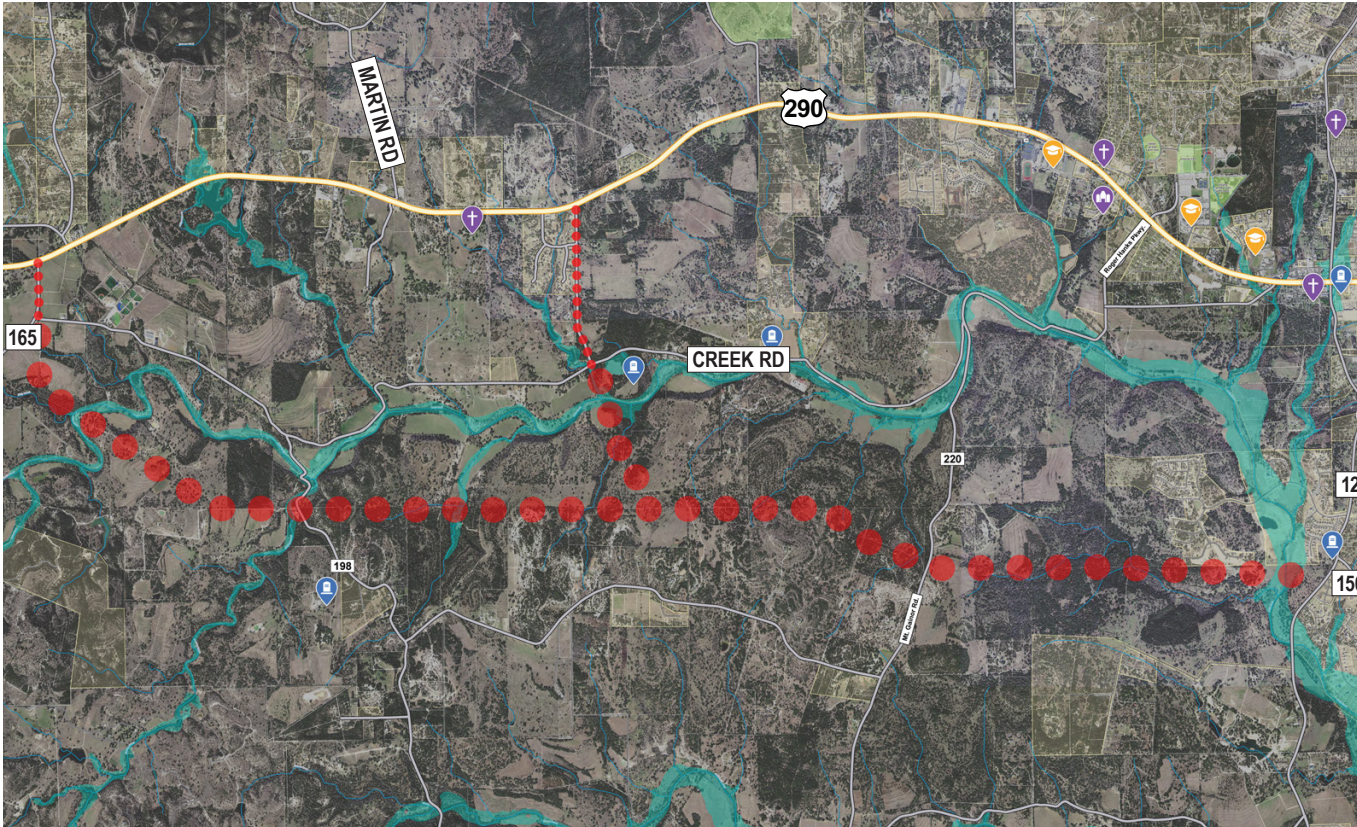
The option to connect to Holder Ln. was removed due to topographic challenges and number of properties impacted. Two additional route options were added for evaluation.



RECOMMENDED ROUTE Spring 2022

Two western connections were removed due to topographic challenges and impacts to structures. The recommended route impacts fewer properties and proposes a connection to US 290 at Martin Rd.

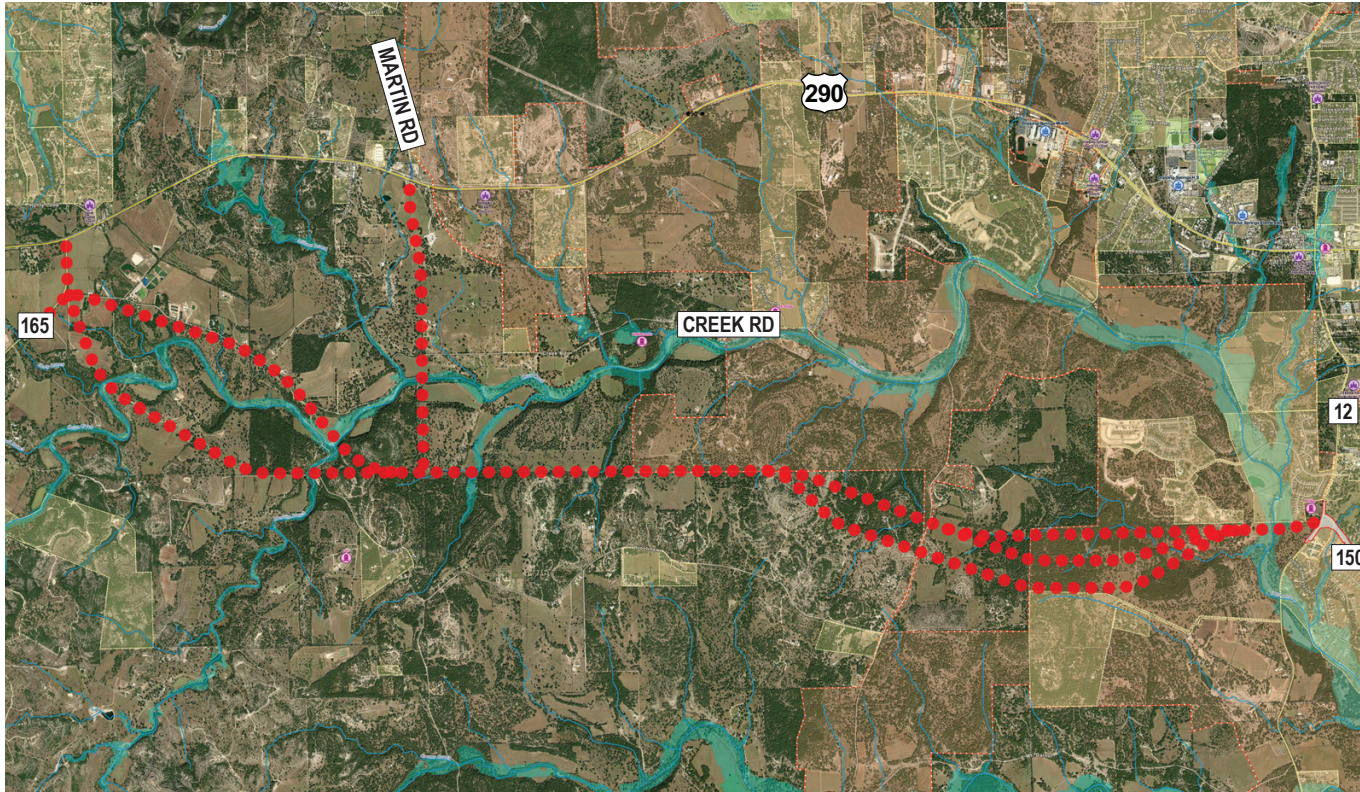
INITIAL ROUTE OPTION



INITIAL ROUTE OPTION Spring 2021

The route options presented during the Virtual Open House in the Spring of 2021 included connections at Holder Ln. and RM 165.

UPDATED ROUTE OPTION

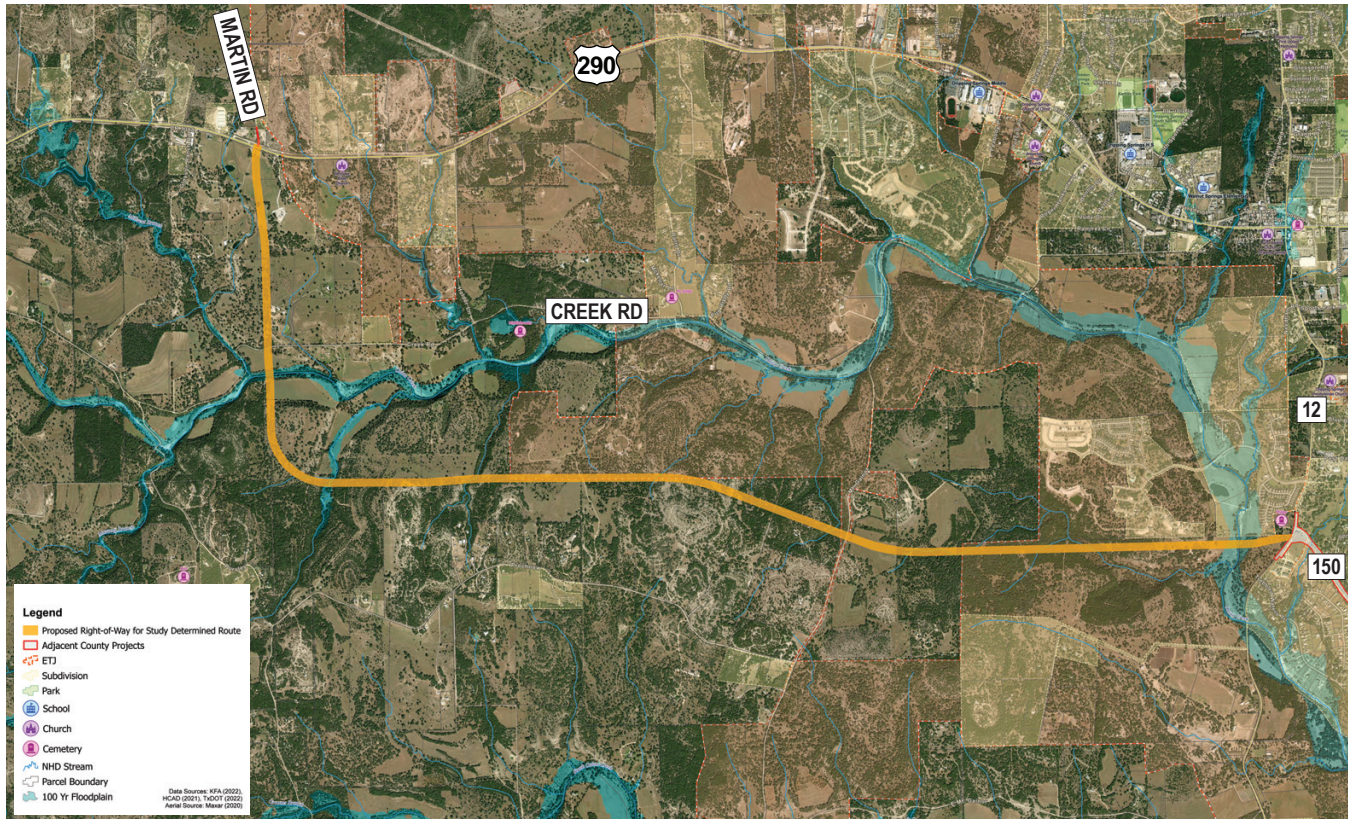


UPDATED ROUTE OPTION

Fall 2021 – Winter 2022

The option to connect to Holder Ln. was removed due to topographic challenges and number of properties impacted. Two additional route options were added for evaluation.

RECOMMENDED ROUTE



RECOMMENDED ROUTE Spring 2022

Two western connections were removed due to topographic challenges and impacts to structures. The recommended route proposes a connection to US 290 at Martin Rd.

DEVELOPMENT CONSIDERATIONS



Additional neighborhood roads are planned as a part of the future development in the study area. Considering the road improvements planned, the Dripping Springs Southwest Connection would provide additional capacity and an alternative for the use of neighborhood roads for travel.

NEXT STEPS

UPCOMING IN 2022



Complete preliminary drainage analysis and finalize route



Present study to Commissioners Court



Complete the study

2023 - 2033

The funding and planning timeline for a roadway typically adheres to the following process:

- Identify funding for design and construction
- Conduct environmental studies and schematic design
- Public involvement, traffic studies, and more evaluation
- Continued coordination with property owners
- Right-of-way negotiations and acquisition
- Perform detailed design
- Establish construction timeline




Throughout this process, the need for additional roadway capacity is continually evaluated as the County reviews changes in growth, changes in travel demand, overall County priorities, and available funding.

HOW TO SHARE INPUT



 **SUBMIT COMMENTS ONLINE**
improve150.com/connection

 **EMAIL COMMENTS**
info@improve150.com

 **IN-PERSON OPEN HOUSE - APRIL 7, 2022**
Share comments on the map.
Submit a comment form.

 **TEXT OR CALL COMMENTS**
512-400-6107

 **MAIL COMMENTS**
DSSW Connection
P.O. Box 5459, Austin, TX 78763

COMMENT PERIOD:
APRIL 4 - APRIL 29, 2022

