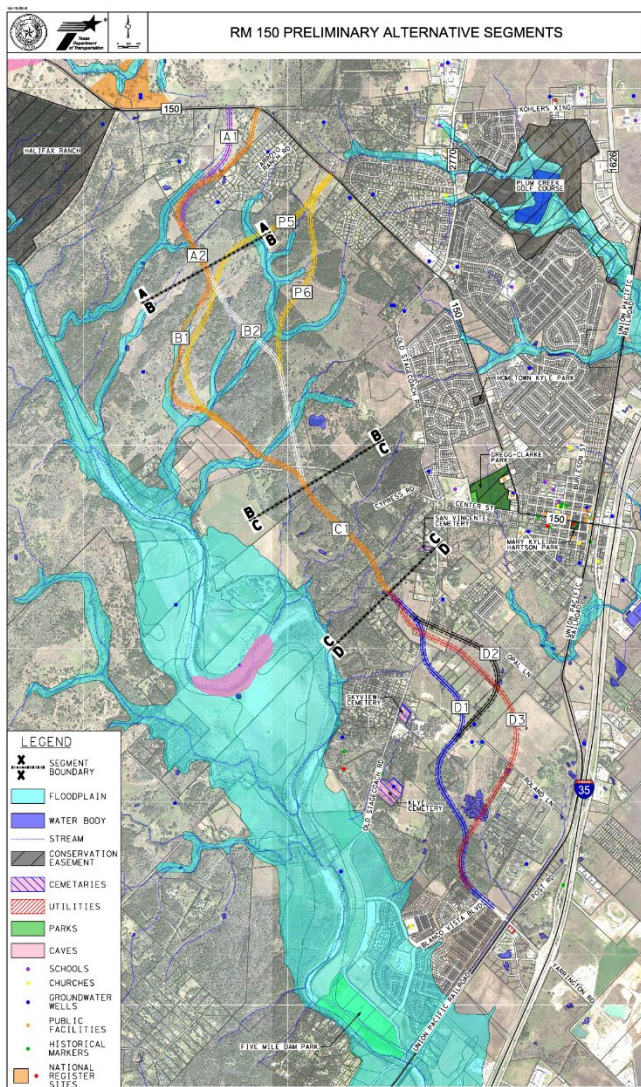




## RM 150 Preliminary Alternative Segments



## Evaluation Criteria for Preliminary Alternative Segments

| Environmental Considerations                                                   |
|--------------------------------------------------------------------------------|
| Acres of Impervious Cover in Edwards Aquifer (Contributing and Recharge Zones) |
| Acres of Golden-Cheeked Warbler Habitat in Proposed ROW                        |
| Number of Stream Crossings                                                     |
| Number of Impacts to Section 4(f) Properties (Parks and Historic Sites)        |
| Right of Way Impacts                                                           |
| Acres of Proposed ROW Requirements                                             |
| Number of Parcels Affected                                                     |
| Potential Residential and Commercial Displacements                             |
| Engineering Considerations                                                     |
| Number of Anticipated Bridge/Culvert Crossings                                 |

| Purpose and Need (Yes or No)                            |
|---------------------------------------------------------|
| Relieves Traffic Congestion Along the Existing RM 150   |
| Improves Safety Along the Existing RM 150               |
| Provides Additional Links in the Transportation Network |